

Cantonment Public School & College, Saidpur

Home Test-1/ 2020

Class- VI (E.V)

Subject: Science (Multiple choice questions)

Time: 30 Minutes

Full Marks- 30

1. To find out the extent of something is----?
a) Counting b) Calculation
c) Measurement d) all the above

●Answer question 2-4 based on the given stem:

A truck loaded with 70 sacks of rice each bag of 50 kg and was bound for Dhaka from Saidpur. The truck covered 228 km in 6 hours.

2. Here kg means--
i. kilogram ii. unit of mass
iii. a fundamental unit of measurement
Which one is correct?

- a) i and ii b) i and iii
c) ii and iii d) i, ii and iii

3. The bus covered a distance of ---per hour
i. 28km ii. 30km iii. 38km

Which one is correct?

- a) i b) ii
c) iii d) i, ii and iii

4. The truck was loaded with rice of the quantity of---

- i. 35 quintals ii. 3.5 metric tons
iii. 3500 kg

Which one is correct?

- a) i and ii b) i and iii
c) ii and iii d) i, ii and iii

5. What is the first step of scientific method?

- a) Data analysis b) Hypothesis
c) Data collection d) problem selection

6. How many fundamental units are there in practice?

- a) 5 b) 6 c) 7 d) 8

7. The unit of Temperature in SI is---

- a) Fahrenheit b) Centigrade
c) Kelvin d) Ampere

8. 1 kilometer is equivalent to---?

- i. 100 meter ii. 100000cm
iii. 1000000mm

Which one is correct?

- a) i b) i and iii
c) ii and iii d) i, ii and iii

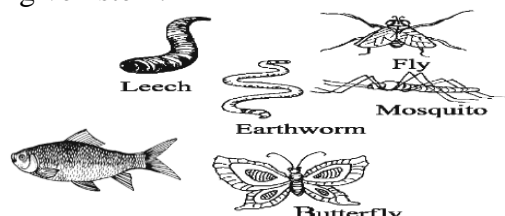
9. Which one of the following is a composite unit?

- a) Meter b) kilogram
c) Square meter d) second

10. Which kingdom does *Euglena* fall into?

- a) Monera b) Protista
c) Plantae d) Fungi

●Answer question: 11-12 based upon the given stem:



11. Fish, frog, mosquito, leech, snake, fly, butterfly are animal because-

- i. they eat food ii. they can move
iii. they reproduce

- a) i and ii b) i and iii
c) ii and iii d) i, ii and iii

12. Fish and fly are animals but the main difference between lies in-

- i. vertebra ii. legs
iii. wings

Which one is correct?

- a) i b) ii
c) iii d) i, ii and iii

13. Which one is mammalian?

- a) duck b) dove c) rat d) frog

14. Well organized nucleus does not exist in the cells of-

- i. monera ii. animal kingdom
iii. Plant kingdom

Which one is correct?

- a) i b) ii
c) iii d) i, ii and iii

15. Which one is not green?

- a) moss b) fungi c) fern d) algae

16. Parasite plant cannot produce food because they do not have-

- i. leaves ii. branchlets iii. Chlorophyll

Which one is correct?

- a) i b) ii
c) iii d) i, ii and iii

17. Margulies and Whitaker are-

- a) Physicist b) Chemist
c) Artist d) Biologist

18. How many divisions are there in non flowering plants?

- a) 2 b) 3 c) 4 d) 5

●Answer question: 19-21 based on the given stem:

Cell is the basic unit of life. In 1665, Robert Hook discovered cells. Living but dead cells contain protoplasm.

19. Who was Robert Hook?
 - a) An English Scientist
 - b) An American scientist
 - c) A Bangladeshi Scientist
 - d) An Indian scientist
20. How many types of cell are there-
 - a) 4 b) 3 c) 2 d) 1
21. Which one is only present in plant cell?
 - a) centrosome b) plastid
 - c) nucleus d) vacuole
22. How many kinds of plastids are there depending on their pigments?
 - a) 4 b) 3 c) 2 d) 1
23. The substances of Cytoplasm are-
 - i. Organic acid, Salt
 - ii. Carbohydrate, protein
 - iii. Fat, inorganic acidWhich one is correct?
 - a) i and ii b) i and iii
 - c) ii and iii d) i, ii and iii
24. What is an animal's cell devoid of?
 - a) Plasma membrane b) Pectin
 - c) Cellulose d) Protein
25. Which is visible without a microscope?
 - a) Virus b) Bacteria c) Algae d) Amoeba
26. Which one is a member of prokaryote kingdom?
 - a) Protozoa b) Bacteria
 - c) Algae d) Fungus
27. Which of the following helps green plants to prepare carbohydrate?
 - a) cell wall b) cell membrane
 - c) cell sap d) chloroplast
28. Which one is an angiosperm?
 - a) cycus b) pinus c) mango d) aurocaria
29. In 1978, Margulies and Whitaker classified the living world into -
 - i. 3kingdoms
 - ii. 4kingdoms
 - iii. 5kingdomsWhich one is correct?
 - a) i b) ii
 - c) iii d) i, ii and iii
30. The units of measurement are----kinds?
 - a) 1 b) 2 c) 3 d) 4

Cantonment Public School & College, Saidpur

Home Test-1/ 2020

Class- VI (E.V)

Subject: Science (CQ)

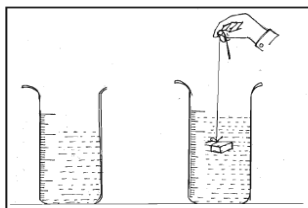
Time: 2 hours 30 Min.

Full Marks- 70

[N.B: Answer any 7 questions]

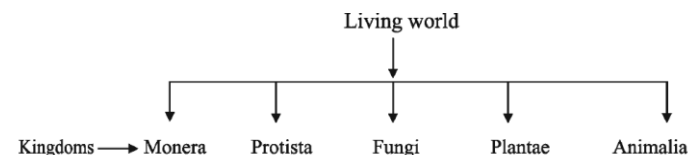
1. The area of Payam's reading room is 400 sq. meters and its length is 40 meters. The length of his reading table is 100cm and breadth is 50cm. Payam's mother put 2 more tables of the same size in that room.
 - a) What is the unit of weight? 1
 - b) Why is correct measurement necessary in every sector? 2
 - c) What is the breadth of Payam's reading room? 3
 - d) How much area will remain unoccupied in the room after keeping the three tables? 4
2. Mr.Rahman is an exporter. He has exported 10 metric tons of medical products this year. Now he uses MKS system though he used to follow FPS system previously for business.
 - a)What is Fahrenheit? 1
 - b) What is meant by derived units? 2
 - c)How many kilograms of jute was exported this year by Mr.Rahman ? 3
 - d) Which system is advantageous between the two systems mentioned in the above stem? Justify. 4

3.



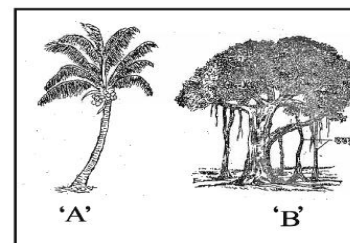
- a) What is the volume of a substance? 1
- b) Write the formula of volume calculation? 2
- c) From the above stem explain how the volume of the stone will be calculated. 3
- d) Comparing with the given stem how the volume of a body of irregular shape can be determined. 4

4.



- a) What do you mean by living world? 1
- b) Give main characteristics of life? 2
- c) Differentiate between fungi and plantae? 3
- d) Discuss about the importance of classification of Margulies and Whitaker. 4

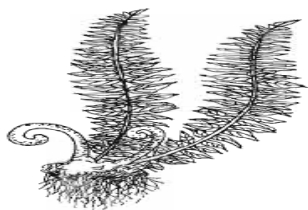
5.



- a) What is moss? 1
- b) Why lajjabati is called sensitive plant? 2
- c) Differentiate between figure-A and figure-B. 3
- d) In figure-B the root is modified -write your opinion. 4



A



B

6.

- What is non flowering plant? 1
- Why non living things cannot move? 2
- Differentiate between A and B? 3
- B is the most advanced forms of plants among the non flowering plants-explain the statement. 4

7.

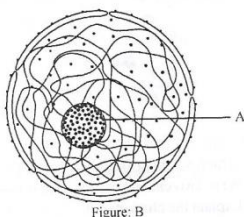


Figure: B

- What is a Centriole? 1
 - Write two characteristics of endoplasmic reticulum? 2
 - Explain the structure and functions of the part A. 3
 - Explain the importance of the Figure B. 4
8. Abonti went to botanical garden with her father. She saw plants of different colors. After that she went to a nearby zoo. There she saw different animals.
- What is mitochondria? 1
 - Why is it called the power house of cell? 2
 - Describe the cause of plants of different colures. 3
 - Write the identifying characteristics of the organism that Abonti saw. 4

9.



Fig -A



Fig -B

- What are vertebrates? 1
- Why toad is called amphibian? 2
- Differentiate between A and B? 3
- Discuss the importance of animals in Figure B. 4



A



B

10.

- What is a Cell membrane? 1
- Mention the importance of cell wall? 2
- Differentiate between cell A and cell B. 3
- Discuss the function of cytoplasm of cell A and B. 4

11. A student of class six is given a box to determine its volume with a measuring tape. The student can calculate the volume of the box by using formula. He has also given an irregular shaped object to find its volume. Now he is given a measuring cylinder.

- What is SI unit of volume? 1
- How is one meter defined? 2
- How can the student differentiate the measurement of the following objects? 3
- How can you determine the volume of an irregular shape object? 4